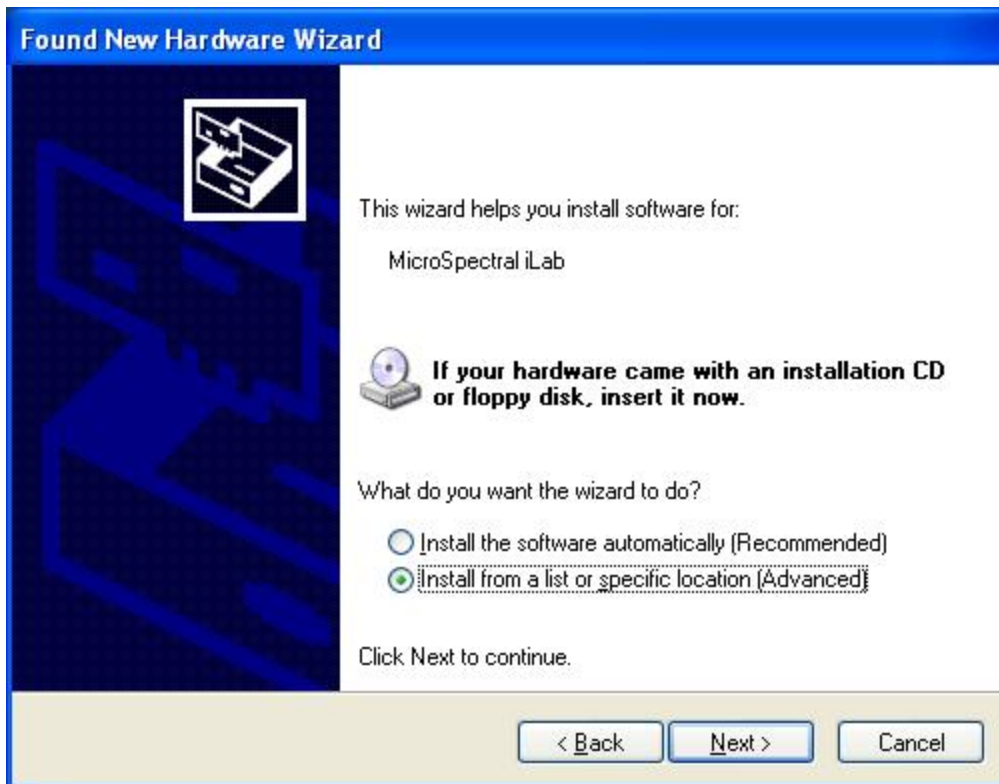


MicroSpectral iLab USB Driver Installation Procedures for Windows XP

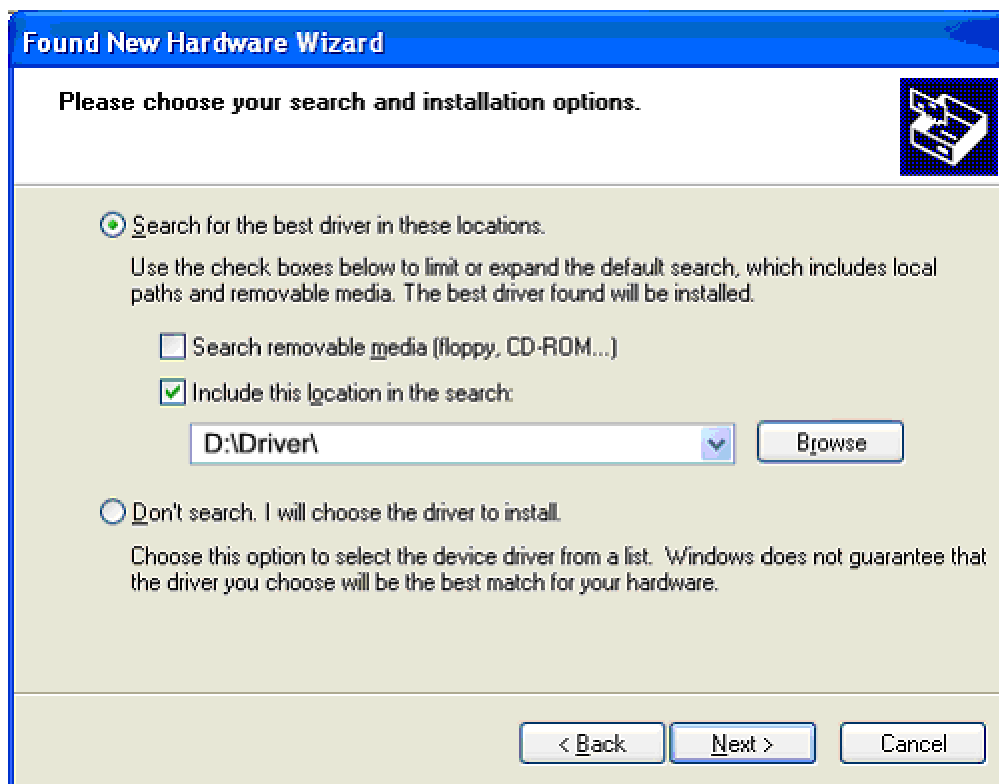
Turn on the iLab Device, and then plug the device into your PC using the included USB cable. The Windows “Found New Hardware Wizard” will present itself:



Select “**No, not this time**” and press the “**Next**” button to continue.



Select “**Install from a list or specific location (Advanced)**”, then click “**Next**” to continue.



Select the “**Search for the best driver in these locations**” option, and then click the “**Include this location in the search**” checkbox.

In the textbox, enter or browse for the **path** of where the **iLab Driver** is located. This may be on your CD ROM, or included with your downloaded installation package. After you have entered or chosen the proper location, press the “**Next**” **button** to continue.



After successful installation, click the “**Finish**” button. You may now use your iLab device in concert with the iLab Spectrum program, or iLab Datalog program.